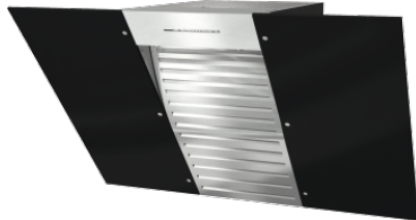


## DA 6096 W Black Wing

Wall mounted cooker hood  
with energy-efficient LED lighting and light-touch switches for easy use.



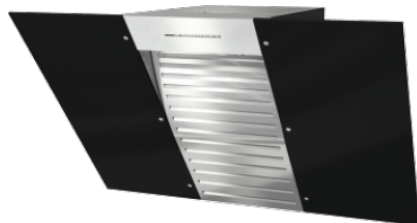
- Lots of headroom – 898 mm wide glass canopy
- Powerful - 650m<sup>3</sup>/h on the booster setting
- Efficient filtration- 10-ply stainless-steel grease filter
- Safe and easy to clean - Miele CleanCover
- Suitable for every home - for extraction or recirculation

EAN: 4002515587515 / article number: 28609640GB / material number: 10081710

Construction type	
Wall mounted cooker hood	•
Design	
Colour	Obsidian black
Operating modes	
Type of air guide	Convertible
Active charcoal filter (order separately)	DKF25-1
User convenience	
Electronic controls	•
Light-touch controls	•
Power levels (number without Booster level)	3
Booster level	•
Cleaning convenience	
Easy-to-clean canopy interior – CleanCover	•
Efficiency and sustainability	
Annual energy consumption in kWh/year	70,4
Filter system	
Number of dishwasher safe stainless steel grease filters	1
Lighting	
LED	•
Number x W	2 x 4,5 W
Light intensity in Lx	380
Colour temperature in K	3.500
Fan	
Dual-action fan	•
AC motor	•
Air throughput with max. duct diameter in extraction mode (not for external version)	
Air throughput in Level 1 (m <sup>3</sup> /h)	200
Air throughput in Level 2 (m <sup>3</sup> /h)	300
Air throughput in Level 3 (m <sup>3</sup> /h)	400
Air throughput in Booster level (m <sup>3</sup> /h)	650
Sound power in Level 1 (dB(A) re 1 pW)	40
Sound power in Level 2 (dB(A) re 1 pW)	48
Sound power in Level 3 (dB(A) re 1 pW)	54
Sound power in Booster level (dB(A) re 1 pW)	66
Sound pressure in Level 1 (dB(A) re 20 µPa)	25
Sound pressure in Level 2 (dB(A) re 20 µPa)	33
Sound pressure in Level 3 (dB(A) re 20 µPa)	39
Sound pressure in Booster level (dB(A) re 20 µPa)	51

## DA 6096 W Black Wing

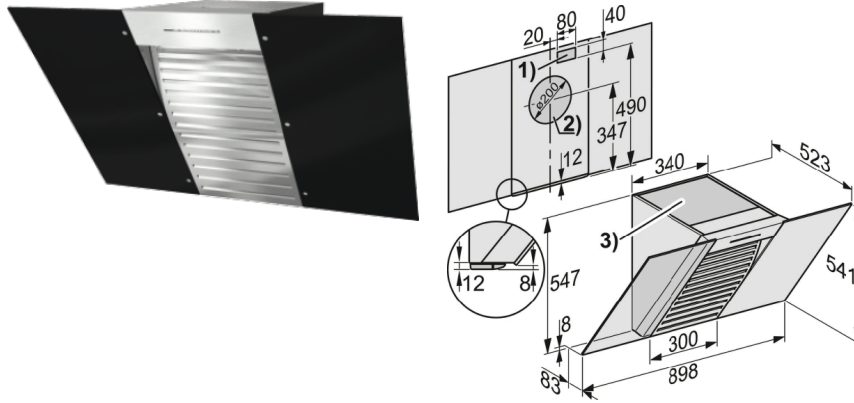
Wall mounted cooker hood  
with energy-efficient LED lighting and light-touch switches for easy use.



Air throughput in recirculation mode	
Air throughput in Level 1 (m³/h)	120
Air throughput in Level 2 (m³/h)	220
Air throughput in Level 3 (m³/h)	320
Air throughput in Booster level (m³/h)	520
Sound power in Level 1 (dB(A) re 1 pW)	48
Sound power in Level 2 (dB(A) re 1 pW)	55
Sound power in Level 3 (dB(A) re 1 pW)	62
Sound power in Booster level (dB(A) re 1 pW)	71
Sound pressure in Level 1 (dB(A) re 20 µPa)	33
Sound pressure in Level 2 (dB(A) re 20 µPa)	41
Sound pressure in Level 3 (dB(A) re 20 µPa)	47
Sound power in Booster level (dB(A) re 1 pW)	56
Safety	
Safety switch-off	•
Single pane tempered glass	•
Technical data	
Overall height for extraction mode and external mode cooker hoods in mm	547
Overall height for recirculation mode cooker hoods in mm	547
Canopy width in mm	898
Canopy height in mm	547
Canopy depth in mm	523
Minimum height above electric hobs in mm	450
Minimum height above gas hobs (max. 12.6 kW total power, burner ≤ 4.5 kW) in mm	650
Net weight in kg	20,0
Length of supply lead in m	1,5
Standard plug fitted	•
Hard-wired connection	•
Total rated load in kW	0,21
Voltage in V	230
Fuse rating in A	10
Frequency in Hz	50
Number of phases	1
Installation notes	
Extraction ducting connection at top	•
Extraction connection at top and rear	•
Diameter of extraction ducting connection in mm	150
Standard accessories	
Non-return flap	•
Adapter to reduce ducting diameter from 150 mm to 125 mm Ø	•

## DA 6096 W Black Wing

Wall mounted cooker hood  
with energy-efficient LED lighting and light-touch switches for easy use.



DA 6096 W - White and Black Wing (Installation drawing)

- 1) Breakthrough, if the mains connection is not with mains plug but with fixed connection.
- 2) Breakthrough in air exhaust to the rear. Exhaust connection alternatively to the rear.
- 3) Air outlet for recirculation. The distance to the ceiling or the top of the unit mounted furniture should be at least 300 mm.